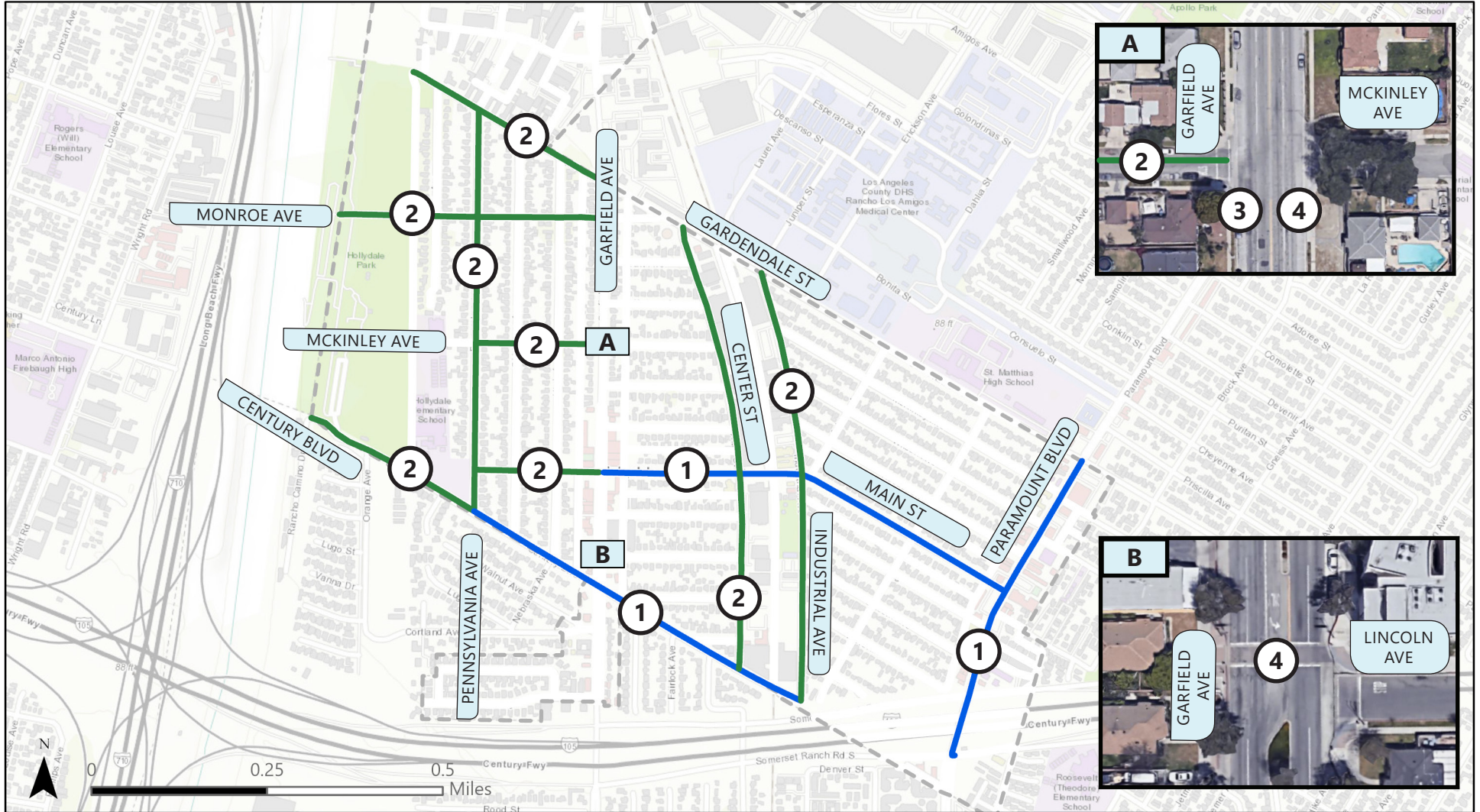


HOLLYDALE AREA ACCESS IMPROVEMENTS PROJECT

PROPOSED COUNTERMEASURES MAP



Bicycle Improvements

- ① Class II Bicycle Lane —————
- ② Class III Bicycle Route (Sharrows) —————

Pedestrian Improvements

- ③ New Crosswalk
- ④ Rectangular Rapid Flashing Beacon (RRFB) Signal

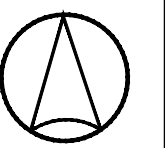
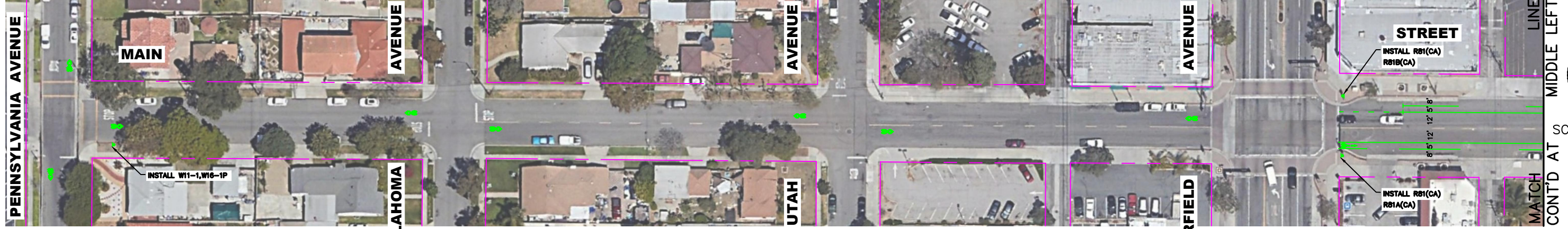
Hollydale Area Access Improvement Project

Street	Location	Location_Type	Countermeasure	Quantity	Description	Justification	Notes
Monroe Avenue	LA River - Garfield	Corridor	Bicycle Sharrows (Class III)	0.75 miles		Bicycle connectivity and connect to LA River bikeway	per Hollydale SP
Gardendale Avenue	LA River - Garfield	Corridor	Bicycle Sharrows (Class III)	0.62 miles		Bicycle connectivity and connect to LA River bikeway and bicycle lanes east of Garfield	per Hollydale SP
Pennsylvania Avenue	Gardendale - Century Boulevard	Corridor	Bicycle Sharrows (Class III)	1.14 miles		Bicycle connectivity within neighborhood	per Hollydale SP
McKinley Avenue	Pennsylvania - Garfield	Corridor	Bicycle Sharrows (Class III)	0.36 miles		Bicycle connectivity	per Hollydale SP
Main Street	LA River - Garfield	Corridor	Bicycle Sharrows (Class III)	0.35 miles		Bicycle connectivity to LA River	per bicycle plan and Hollydale SP
Main Street	Garfield - Paramount	Corridor	Bicycle Lanes (Class II)	1.23 miles		Bicycle connectivity	per Hollydale SP
Century Boulevard	LA River - Pennsylvania	Corridor	Bicycle Sharrows (Class III)	0.53 miles		Bicycle connectivity	
Century Boulevard	Pennsylvania - Industrial Avenue	Corridor	Bicycle Lanes (Class II)	1.07 miles		Bicycle connectivity in neighborhood and to proposed new Metro Green Line/Eco Rapid transit station	per Hollydale SP
Center Street	Gardendale - Century Boulevard	Corridor	Bicycle Sharrows (Class III)	1.28 miles		Bicycle connectivity in neighborhood and to proposed new Metro Green Line/Eco Rapid transit station and Gardendale Eco Rapid station	per Hollydale SP

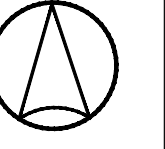
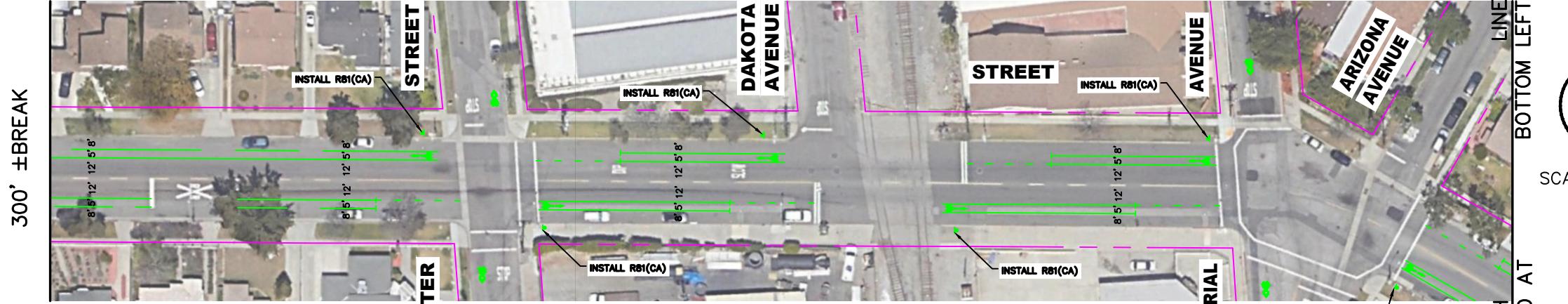
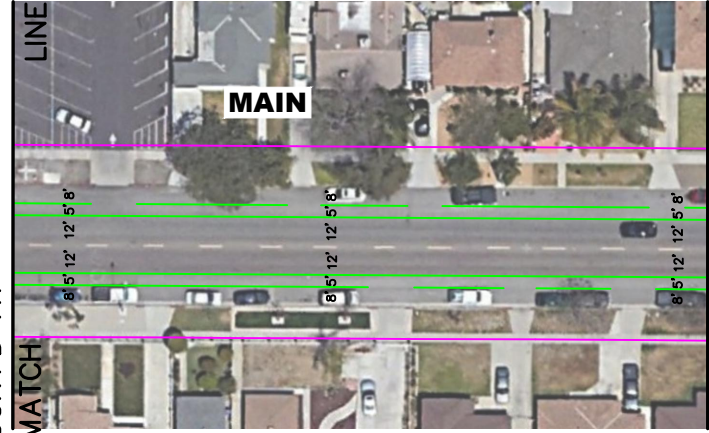
Hollydale Area Access Improvement Project

Street	Location	Location_Type	Countermeasure	Quantity	Description	Justification	Notes
Industrial Avenue	Gardendale - Century Boulevard	Corridor	Bicycle Sharrows (Class III)	1.23 miles		Bicycle connectivity in neighborhood and to proposed new Metro Green Line/Eco Rapid transit station and Gardendale Eco Rapid station	per Hollydale SP
Paramount Boulevard	Gardendale - Somerset Ranch Road	Corridor	Bicycle Lanes (Class II)	0.93 miles		Bicycle connectivity to commercial areas and to proposed Metro Green Line/Eco Rapid transit station and Gardendale Eco Rapid station	per Hollydale SP
Garfield Avenue	McKinley Avenue	Intersection	New crosswalk	1 Avenue	across Garfield	Pedestrian connectivity	per Hollydale SP
Garfield Avenue	McKinley Avenue	Intersection	RRFB	1 on south leg		Pedestrian connectivity	per Hollydale SP
Garfield Avenue	Lincoln Avenue	Intersection	RRFB	1 on north leg		Pedestrian visibility and safety	per Hollydale SP

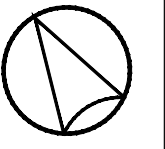
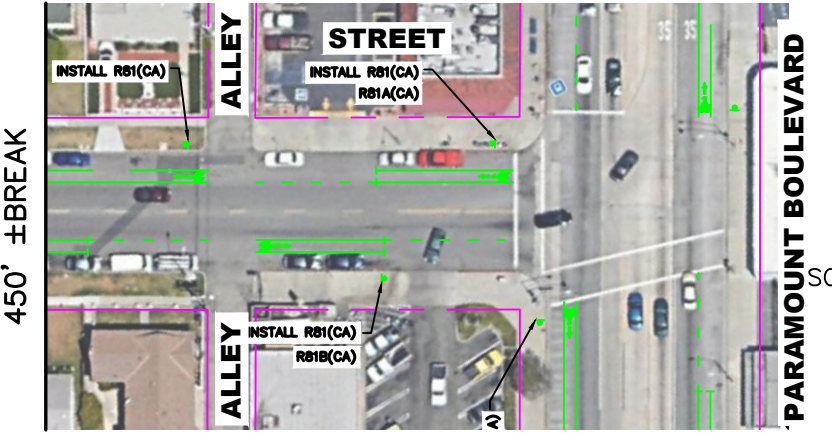
Last Revised: Fri, Sep 11, 2020 - 8:24pm
 User: P:\Projects\2020\20200911\20200911_South Gate RTP - Cycle 5 - Civil\AutoCAD\Design\Mapdata_Rev.dwg
 Plotted By: Owner
 Date Plotted: Fri, Sep 11, 2020 - 8:27pm



SCALE: 1"=80'



SCALE: 1"=80'



SCALE: 1"=80'

LEGEND (IMPROVEMENTS):

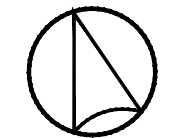
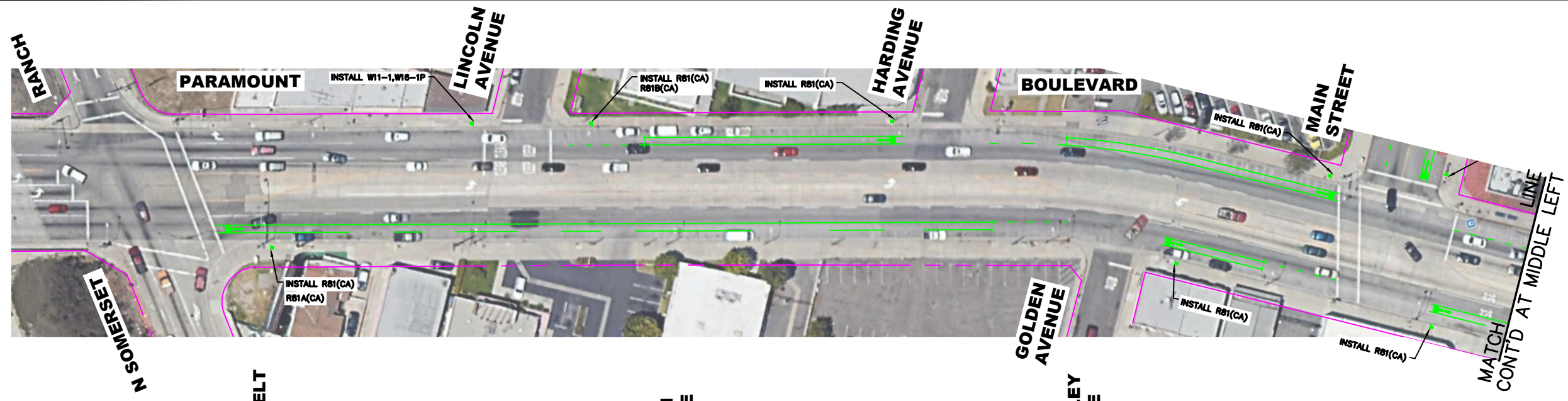
- PROPOSED CURB EXTENSION
- PROPOSED STRIPING
- PROPOSED SIGN AND POST
- PROPOSED ADA CURB RAMP
- PROPOSED RRFB
- PROPOSED HAWK SIGNAL

LEGEND (EXISTING):

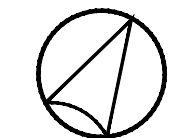
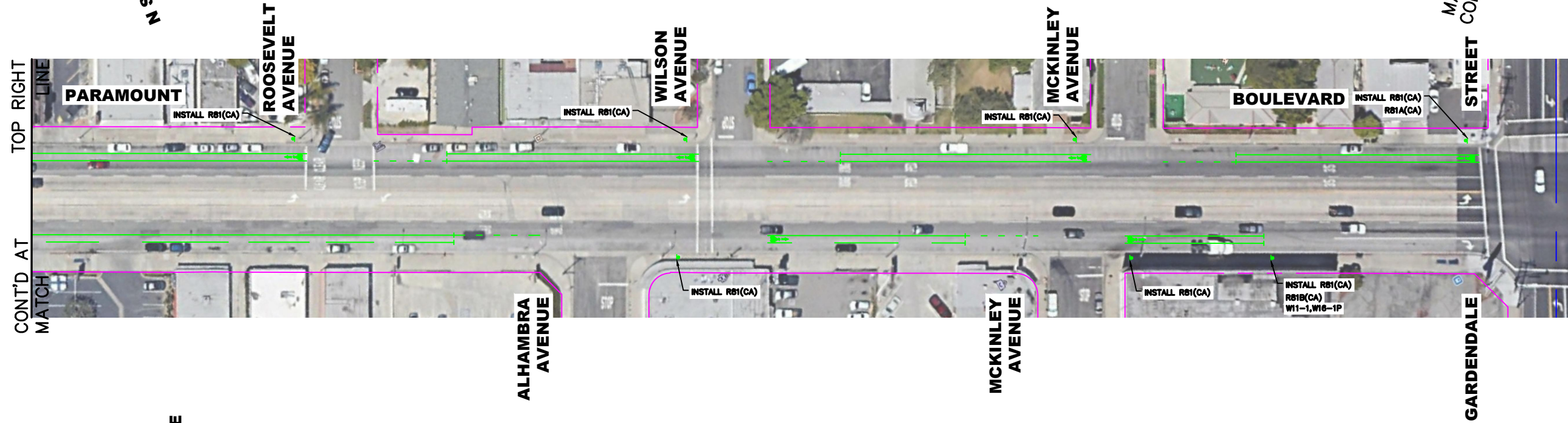
- EXISTING RIGHT OF WAY
- EXISTING STRIPING & MARKINGS TO BE REMOVED
- EXISTING STRIPING
- EXISTING SIGNALIZED INTERSECTION



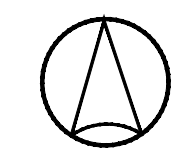
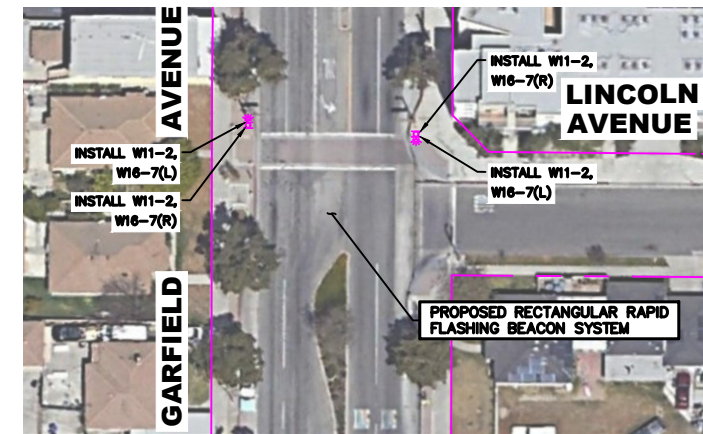
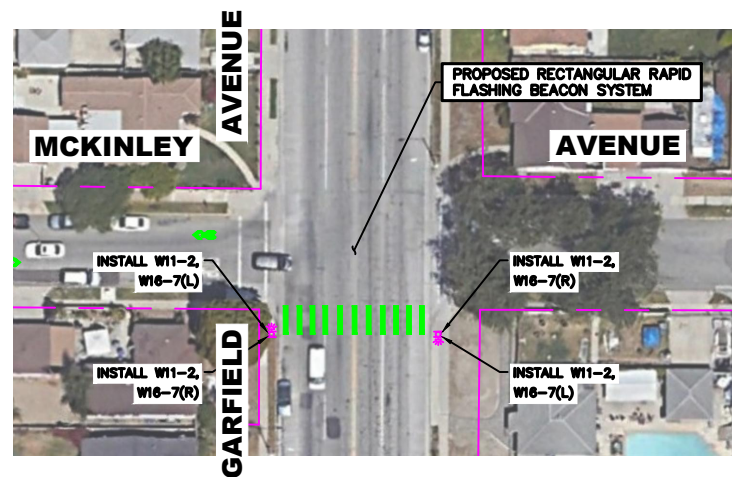
CITY OF SOUTH GATE
CONCEPTUAL DESIGN PLAN
MAIN STREET BETWEEN PENNSYLVANIA AVENUE
AND PARAMOUNT BOULEVARD
SHEET 5 OF 6



SCALE: 1"=80'



SCALE: 1"=80'



SCALE: 1"=80'

LEGEND (IMPROVEMENTS):

- PROPOSED CURB EXTENSION
- PROPOSED STRIPING
- PROPOSED SIGN AND POST
- PROPOSED ADA CURB RAMP
- PROPOSED RRFB
- PROPOSED HAWK SIGNAL

LEGEND (EXISTING):

- EXISTING RIGHT OF WAY
- EXISTING STRIPING & MARKINGS TO BE REMOVED
- EXISTING STRIPING
- EXISTING SIGNALIZED INTERSECTION



CITY OF SOUTH GATE
CONCEPTUAL DESIGN PLAN
PARAMOUNT BLVD BET. SOMERSET RANCH AND
GARDENDALE STREET
SHEET 6 OF 6

Last Revised: Fri, Sep 11, 2020 8:27pm
 User: P:\Projects\2020\001006_South Gate ATP_Dyn 5 Crnt_Webinars\Design\Map\Map_06.dwg
 Printed By: Owner
 Drawing: 2/20/2020 10:08 South Gate ATP_Dyn 5 Crnt_Webinars\Design\Map\Map_06.dwg