



9001-9019 LONG BEACH BOULEVARD HABITAT FOR HUMANITY PROJECT

Appendix I Environmental Assessment Reference Documents

- South Gate General Plan 2035 Corridor Map
- Department of Conservation, Geologic Hazards: Liquefaction Zone
- Department of Conservation, Geologic Hazards: Alquist-Priolo Earthquake Zone
- Department of Conservation, Geologic Hazards: Landslides
- US Web Soils Survey Map & Map Unit Description
- US Census Bureau, S2301 Employment Status, California
- US Census Bureau, S2301 Employment Status, US
- US Census Bureau, S2301 Employment Status, City of South Gate
- SCAG 6th Cycle Final RNHA Allocation Plan



9001-9019 LONG BEACH BOULEVARD HABITAT FOR HUMANITY PROJECT

Appendix G
Statutory Checklist Reference Documents

South Gate General Plan 2035 Corridor Map

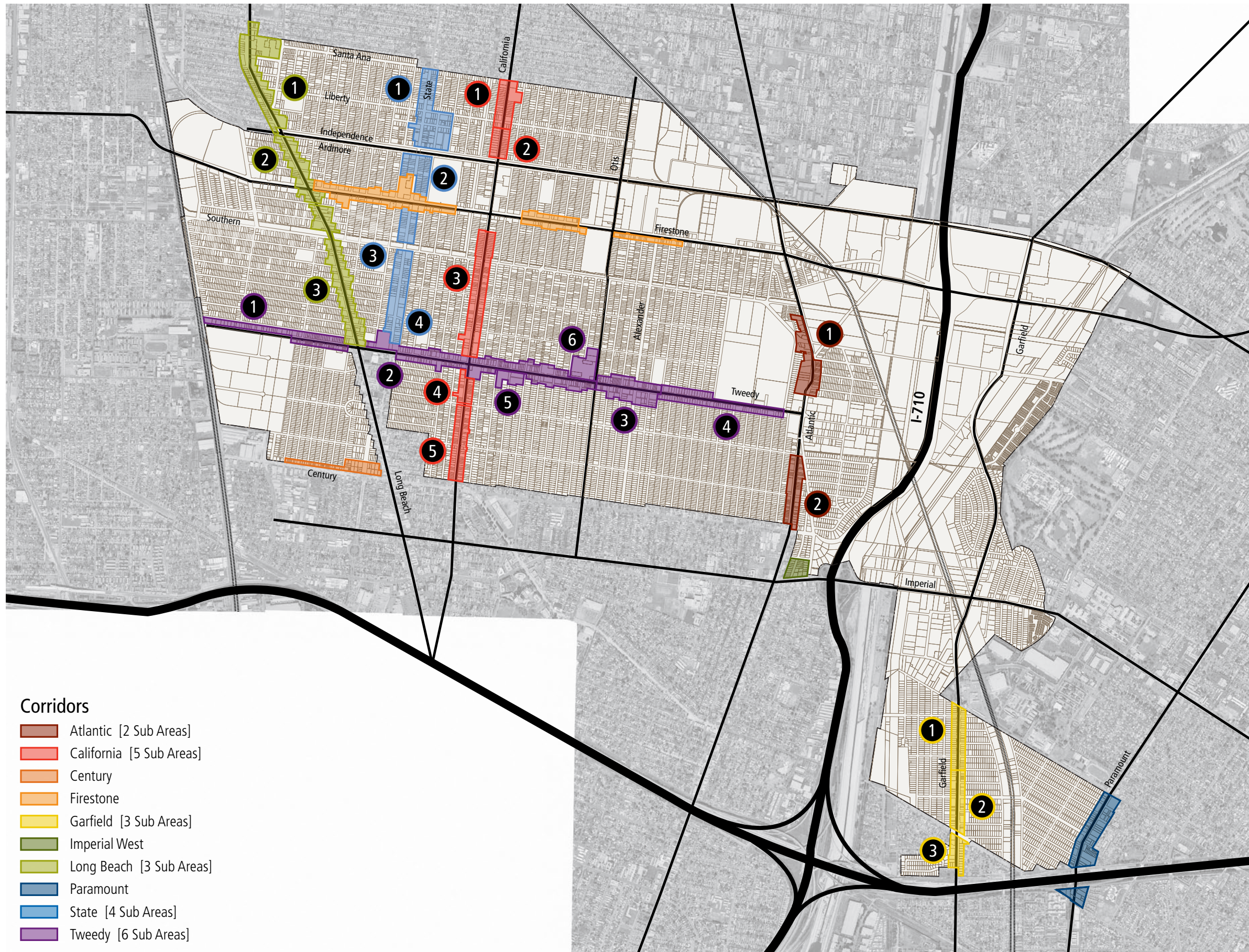


Figure CD 5 Corridors



9001-9019 LONG BEACH BOULEVARD HABITAT FOR HUMANITY PROJECT

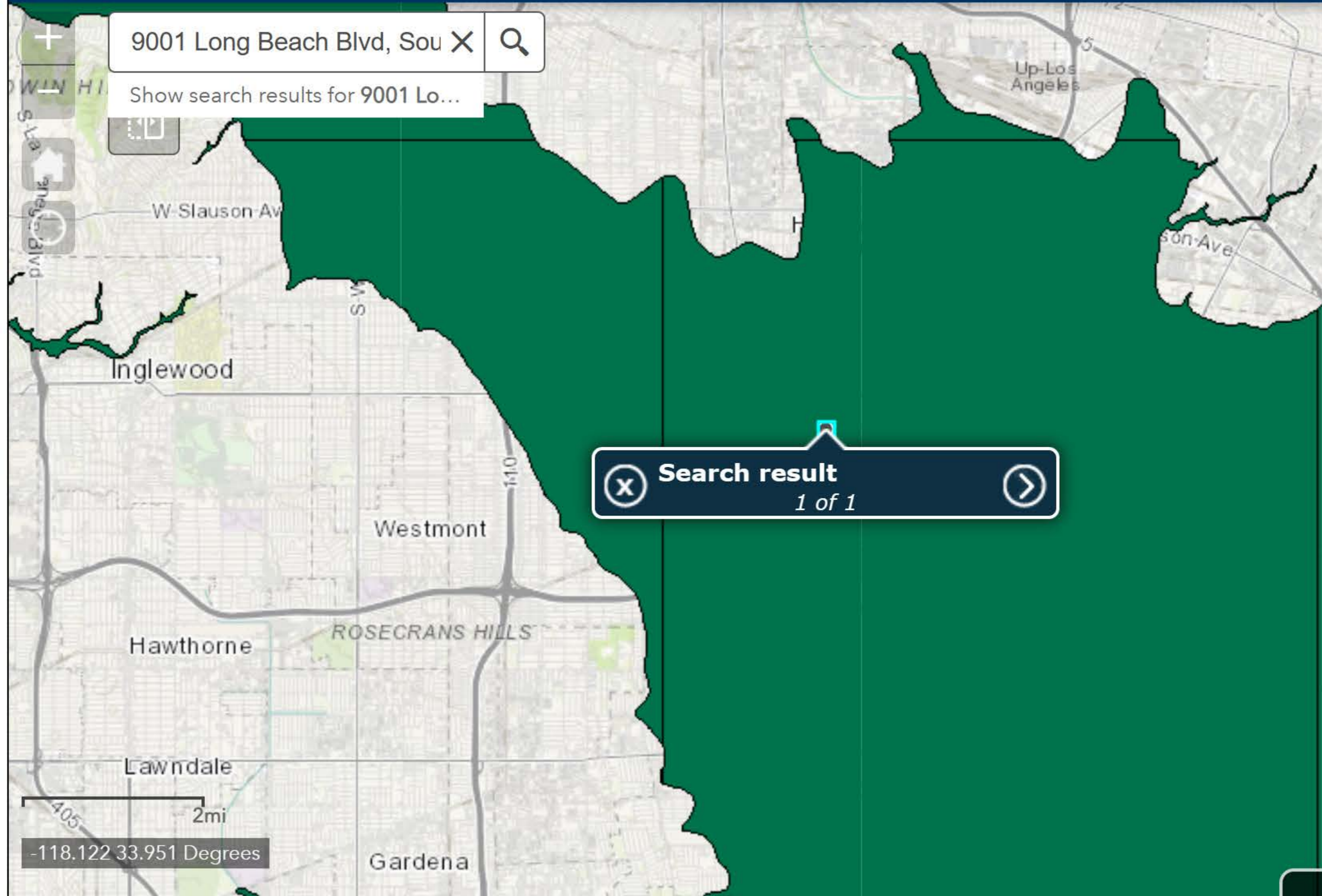
Appendix G
Statutory Checklist Reference Documents

Department of Conservation, Geologic Hazards: Liquefaction Zone



Seismic Hazards Program: Liquefaction Zones

Liquefaction Zones





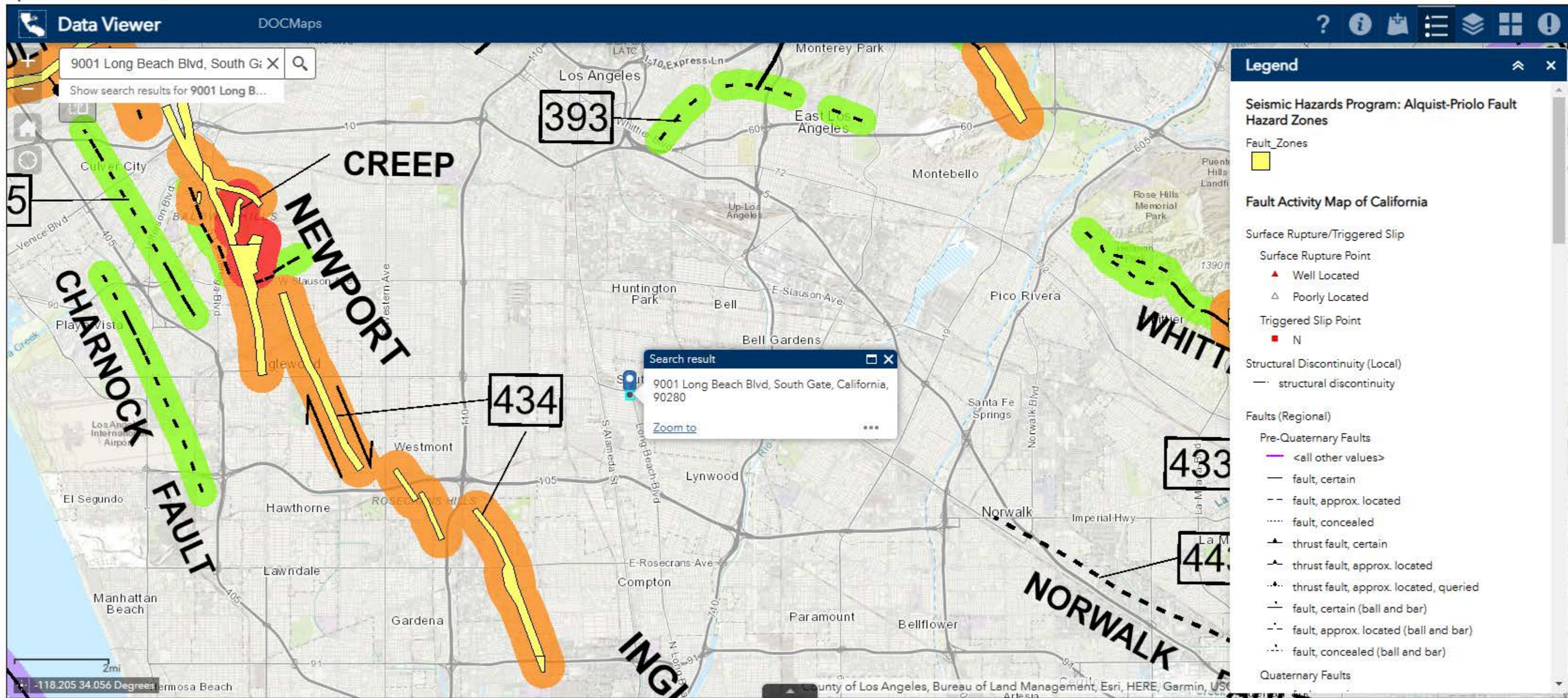
9001-9019 LONG BEACH BOULEVARD HABITAT FOR HUMANITY PROJECT

Appendix G
Statutory Checklist Reference Documents

Department of Conservation, Geologic Hazards: Alquist-Priolo
Earthquake Zone

Data Viewer

Open full screen in a new tab





9001-9019 LONG BEACH BOULEVARD HABITAT FOR HUMANITY PROJECT

Appendix G
Statutory Checklist Reference Documents

Department of Conservation, Geologic Hazards: Landslides



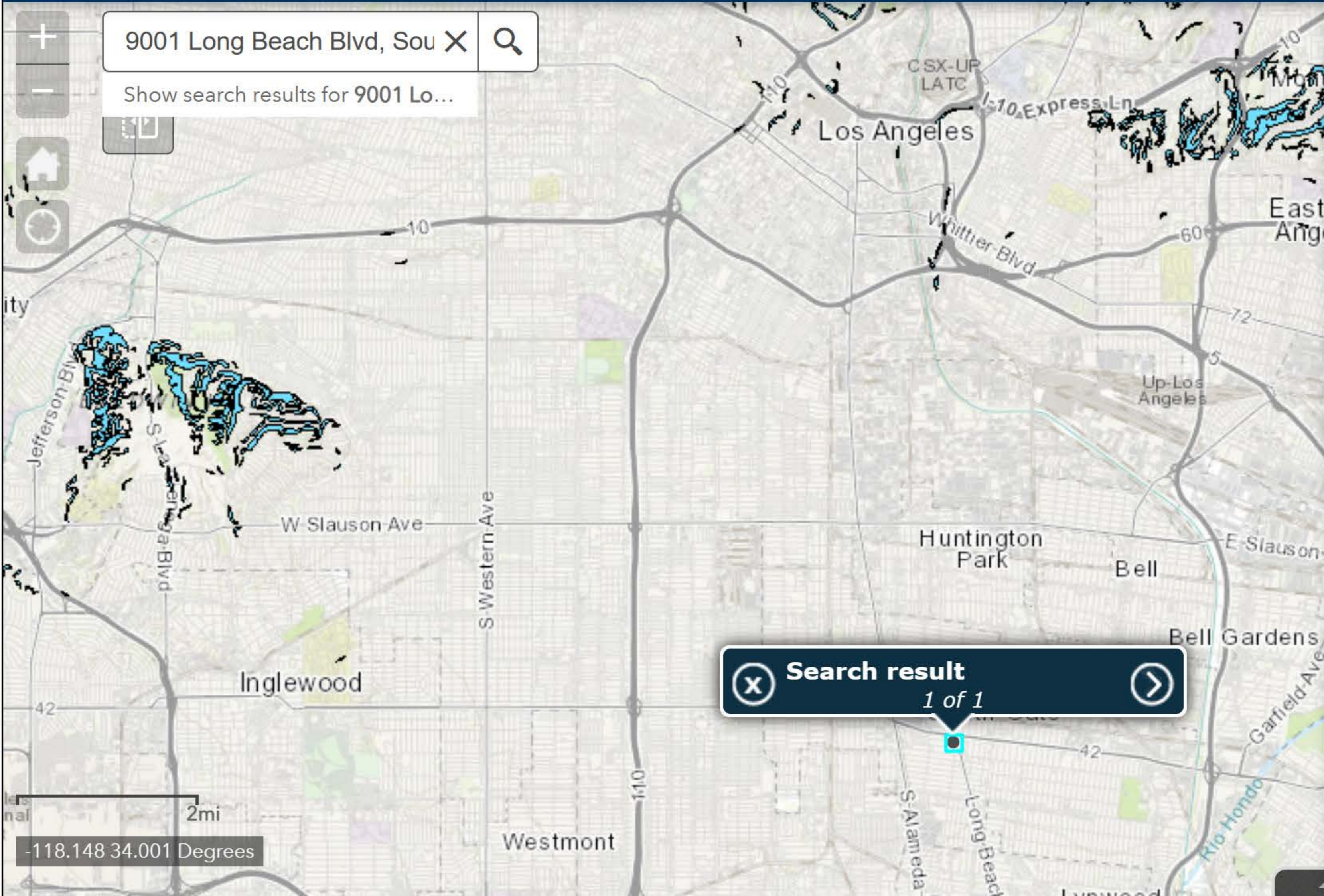
Seismic Hazards Program: Landslide Zones

Landslide Zones



9001 Long Beach Blvd, Sou X

Show search results for 9001 Lo...



Search result

1 of 1

-118.148 34.001 Degrees

2mi



9001-9019 LONG BEACH BOULEVARD HABITAT FOR HUMANITY PROJECT

Appendix G
Statutory Checklist Reference Documents

US Web Soils Survey Map & Map Unit Description

Search

Map Unit Legend

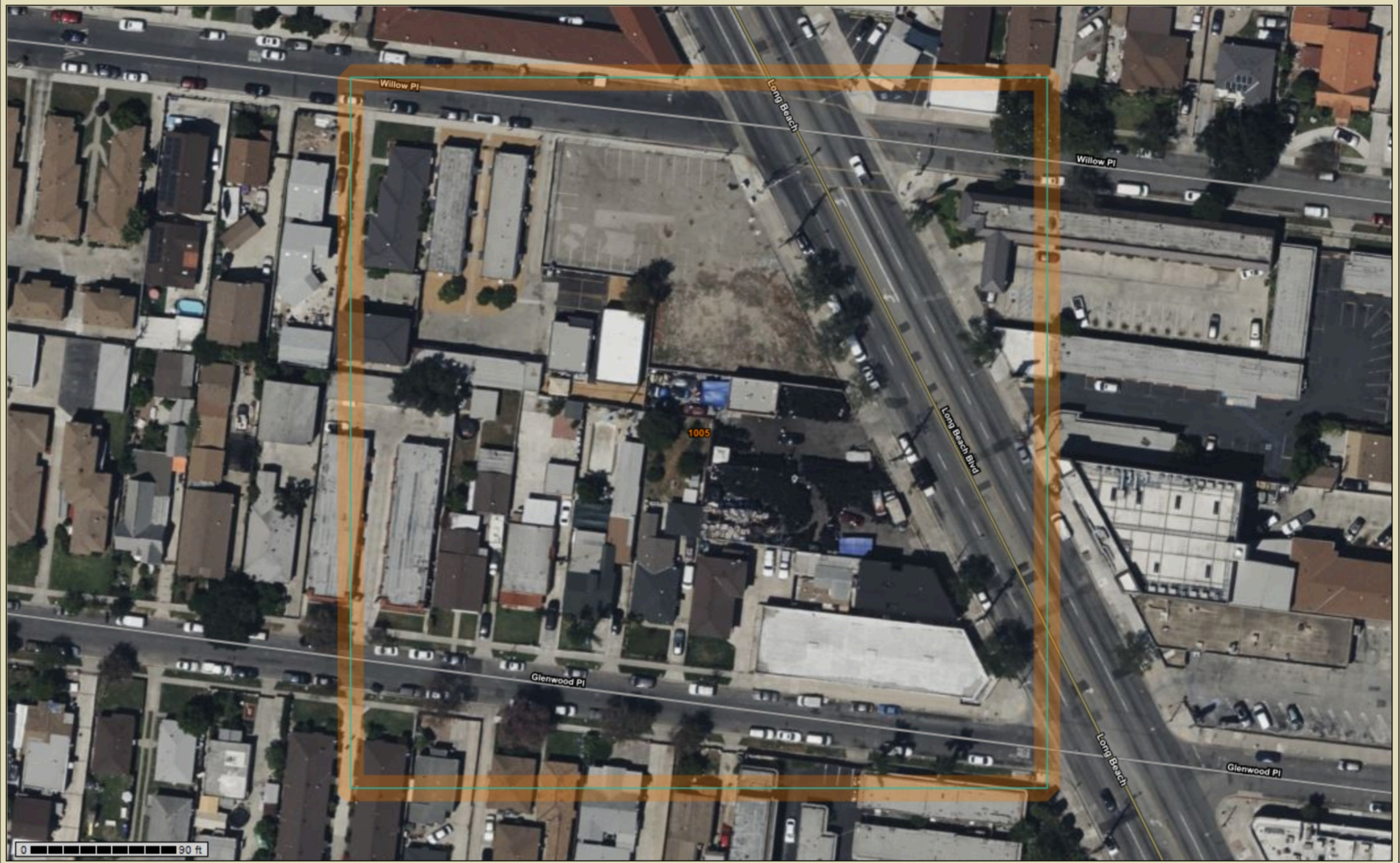
Los Angeles County, California, Southeastern Part (CA696)

Los Angeles County, California, Southeastern Part (CA696)

Map Unit Symbol	Map Unit Name	Acres in AOI	Percent of AOI
1005	Urban land-Biscailuz-Hueneme, drained complex, 0 to 2 percent slopes	4.3	100.0%
Totals for Area of Interest		4.3	100.0%

Soil Map

Legend Scale (not to scale)



Warning: Soil Map may not be valid at this scale.

You have zoomed in beyond the scale at which the soil map for this area is intended to be used. Mapping of soils is done at a particular scale. The soil surveys that comprise your AOI were mapped at 1:24,000. The design of map units and the level of detail shown in the resulting soil map are dependent on that map scale.

Enlargement of maps beyond the scale of mapping can cause misunderstanding of the detail of mapping and accuracy of soil line placement. The maps do not show the small areas of contrasting soils that could have been shown at a more detailed scale.

Map Unit Description

The map units delineated on the detailed soil maps in a soil survey represent the soils or miscellaneous areas in the survey area. The map unit descriptions in this report, along with the maps, can be used to determine the composition and properties of a unit.

A map unit delineation on a soil map represents an area dominated by one or more major kinds of soil or miscellaneous areas. A map unit is identified and named according to the taxonomic classification of the dominant soils. Within a taxonomic class there are precisely defined limits for the properties of the soils. On the landscape, however, the soils are natural phenomena, and they have the characteristic variability of all natural phenomena. Thus, the range of some observed properties may extend beyond the limits defined for a taxonomic class. Areas of soils of a single taxonomic class rarely, if ever, can be mapped without including areas of other taxonomic classes. Consequently, every map unit is made up of the soils or miscellaneous areas for which it is named, soils that are similar to the named components, and some minor components that differ in use and management from the major soils.

Most of the soils similar to the major components have properties similar to those of the dominant soil or soils in the map unit, and thus they do not affect use and management. These are called noncontrasting, or similar, components. They may or may not be mentioned in a particular map unit description. Some minor components, however, have properties and behavior characteristics divergent enough to affect use or to require different management. These are called contrasting, or dissimilar, components. They generally are in small areas and could not be mapped separately because of the scale used. Some small areas of strongly contrasting soils or miscellaneous areas are identified by a special symbol on the maps. If included in the database for a given area, the contrasting minor components are identified in the map unit descriptions along with some characteristics of each. A few areas of minor components may not have been observed, and consequently they are not mentioned in the descriptions, especially where the pattern was so complex that it was impractical to make enough observations to identify all the soils and miscellaneous areas on the landscape.

The presence of minor components in a map unit in no way diminishes the usefulness or accuracy of the data. The objective of mapping is not to delineate pure taxonomic classes but rather to separate the landscape into landforms or landform segments that have similar use and management requirements. The delineation of such segments on the map provides sufficient information for the development of resource plans. If intensive use of small areas is planned, however, onsite investigation is needed to define and locate the soils and miscellaneous areas.

An identifying symbol precedes the map unit name in the map unit descriptions. Each description includes general facts about the unit and gives important soil properties and qualities.

Soils that have profiles that are almost alike make up a *soil series*. All the soils of a series have major horizons that are similar in composition, thickness, and arrangement. Soils of a given series can differ in texture of the surface layer, slope, stoniness, salinity, degree of erosion, and other characteristics that affect their use. On the basis of such differences, a soil series is divided into *soil phases*. Most of the areas shown on the detailed soil maps are phases of soil series. The name of a soil phase commonly indicates a feature that affects use or management. For example, Alpha silt loam, 0 to 2 percent slopes, is a phase of the Alpha series.

Some map units are made up of two or more major soils or miscellaneous areas. These map units are complexes, associations, or undifferentiated groups.

A *complex* consists of two or more soils or miscellaneous areas in such an intricate pattern or in such small areas that they cannot be shown separately on the maps. The pattern and proportion of the soils or miscellaneous areas are somewhat similar in all areas. Alpha-Beta complex, 0 to 6 percent slopes, is an example.

An *association* is made up of two or more geographically associated soils or miscellaneous areas that are shown as one unit on the maps. Because of present or anticipated uses of the map units in the survey area, it was not considered practical or necessary to map the soils or miscellaneous areas separately. The pattern and relative proportion of the soils or miscellaneous areas are somewhat similar. Alpha-Beta association, 0 to 2 percent slopes, is an example.

An *undifferentiated group* is made up of two or more soils or miscellaneous areas that could be mapped individually but are mapped as one unit because similar interpretations can be made for use and management. The pattern and proportion of the soils or miscellaneous areas in a mapped area are not uniform. An area can be made up of only one of the major soils or miscellaneous areas, or it can be made up of all of them. Alpha and Beta soils, 0 to 2 percent slopes, is an example.

Some surveys include *miscellaneous areas*. Such areas have little or no soil material and support little or no vegetation. Rock outcrop is an example.

Additional information about the map units described in this report is available in other soil reports, which give properties of the soils and the limitations, capabilities, and potentials for many uses. Also, the narratives that accompany the soil reports define some of the properties included in the map unit descriptions.

Los Angeles County, California, Southeastern Part

1005—Urban land-Biscailuz-Hueneme, drained complex, 0 to 2 percent slopes

Map Unit Setting

National map unit symbol: 2nbzh

Elevation: 0 to 190 feet

Mean annual precipitation: 11 to 16 inches

Mean annual air temperature: 63 to 66 degrees F

Frost-free period: 350 to 365 days

Farmland classification: Prime farmland if irrigated and drained

Map Unit Composition

Urban land: 50 percent

Biscailuz and similar soils: 20 percent

Hueneme, drained, and similar soils: 15 percent

Minor components: 15 percent

Estimates are based on observations, descriptions, and transects of the mapunit.

Description of Urban Land

Setting

Landform: Alluvial fans

Properties and qualities

Slope: 0 to 2 percent

Depth to restrictive feature: 0 inches to manufactured layer

Runoff class: Very high

Interpretive groups

Land capability classification (irrigated): None specified

Land capability classification (nonirrigated): 8

Ecological site: R019XG911CA - Loamy Fan

Hydric soil rating: No

Description of Biscailuz

Setting

Landform: Alluvial fans

Landform position (three-dimensional): Dip

Down-slope shape: Linear

Across-slope shape: Linear

Parent material: Discontinuous human-transported material over mixed alluvium derived from granite and/or sedimentary rock

Typical profile

^A - 0 to 3 inches: loam

^Cu1 - 3 to 12 inches: loam

2Bk1 - 12 to 24 inches: loam

2Bk2 - 24 to 31 inches: loam

2C2 - 31 to 43 inches: loamy fine sand

3Ab3 - 43 to 79 inches: silt loam

Properties and qualities

Slope: 0 to 2 percent

Depth to restrictive feature: More than 80 inches

Drainage class: Somewhat poorly drained

Runoff class: Low

Capacity of the most limiting layer to transmit water

(Ksat): Moderately high to high (0.57 to 1.98 in/hr)

Depth to water table: More than 80 inches

Frequency of flooding: NoneRare

Frequency of ponding: None
Calcium carbonate, maximum content: 15 percent
Maximum salinity: Nonsaline to very slightly saline (0.0 to 2.0 mmhos/cm)
Sodium adsorption ratio, maximum: 4.0
Available water supply, 0 to 60 inches: Moderate (about 8.6 inches)

Interpretive groups

Land capability classification (irrigated): None specified
Land capability classification (nonirrigated): 3w
Hydrologic Soil Group: B
Ecological site: R019XG911CA - Loamy Fan
Hydric soil rating: No

Description of Hueneme, Drained

Setting

Landform: Alluvial fans
Landform position (three-dimensional): Dip
Down-slope shape: Linear
Across-slope shape: Linear
Parent material: Discontinuous human-transported material over mixed alluvium derived from granite and/or sedimentary rock

Typical profile

^A - 0 to 4 inches: fine sandy loam
C1 - 4 to 22 inches: fine sandy loam
C2 - 22 to 41 inches: fine sandy loam
C3 - 41 to 61 inches: silt loam
C4 - 61 to 75 inches: fine sandy loam
C5 - 75 to 79 inches: very fine sandy loam

Properties and qualities

Slope: 0 to 2 percent
Depth to restrictive feature: More than 80 inches
Drainage class: Somewhat poorly drained
Runoff class: Very low
Capacity of the most limiting layer to transmit water (Ksat): Moderately high to high (0.60 to 2.00 in/hr)
Depth to water table: More than 80 inches
Frequency of flooding: NoneRare
Frequency of ponding: None
Calcium carbonate, maximum content: 3 percent
Maximum salinity: Very slightly saline to slightly saline (2.0 to 4.0 mmhos/cm)
Sodium adsorption ratio, maximum: 8.0
Available water supply, 0 to 60 inches: High (about 10.5 inches)

Interpretive groups

Land capability classification (irrigated): None specified
Land capability classification (nonirrigated): 3w
Hydrologic Soil Group: B
Ecological site: R019XG911CA - Loamy Fan

Hydric soil rating: No

Minor Components

Bolsa, drained

Percent of map unit: 8 percent

Landform: Alluvial fans

Landform position (three-dimensional): Dip

Down-slope shape: Linear

Across-slope shape: Linear

Hydric soil rating: No

Pico

Percent of map unit: 5 percent

Landform: Alluvial fans

Landform position (three-dimensional): Talf

Down-slope shape: Linear

Across-slope shape: Linear

Hydric soil rating: No

Xerorthents

Percent of map unit: 2 percent

Landform: Alluvial fans

Landform position (three-dimensional): Dip

Down-slope shape: Linear

Across-slope shape: Linear

Hydric soil rating: No

Data Source Information

Soil Survey Area: Los Angeles County, California, Southeastern Part

Survey Area Data: Version 9, Sep 1, 2022



9001-9019 LONG BEACH BOULEVARD HABITAT FOR HUMANITY PROJECT

Appendix G
Statutory Checklist Reference Documents

US Census Bureau, S2301 Employment Status, California

Table: ACSST5Y2021.S2301

	California			
	Total		Unemployment rate	
Label	Estimate	Margin of Error	Estimate	Margin of Error
Population 16 years and over	31,499,704	±4,287	6.5%	±0.1
AGE				
16 to 19 years	2,075,785	±4,721	19.5%	±0.4
20 to 24 years	2,626,849	±1,451	11.1%	±0.2
25 to 29 years	2,992,210	±1,133	7.4%	±0.2
30 to 34 years	2,949,412	±911	5.9%	±0.1
35 to 44 years	5,341,049	±1,445	5.3%	±0.1
45 to 54 years	5,043,403	±1,340	5.1%	±0.1
55 to 59 years	2,502,174	±8,929	5.1%	±0.1
60 to 64 years	2,298,943	±8,915	5.2%	±0.1
65 to 74 years	3,363,447	±816	5.4%	±0.2
75 years and over	2,306,432	±766	5.7%	±0.5
RACE AND HISPANIC OR LATINO ORIGIN				
White alone	16,866,694	±25,399	6.0%	±0.1
Black or African American alone	1,819,749	±6,359	10.5%	±0.3
American Indian and Alaska Native alone	288,126	±6,268	9.1%	±0.5
Asian alone	4,911,186	±7,607	5.1%	±0.1
Native Hawaiian and Other Pacific Islander alone	120,445	±1,992	7.7%	±0.8
Some other race alone	4,594,343	±24,825	7.0%	±0.1
Two or more races	2,899,161	±25,224	8.5%	±0.2
Hispanic or Latino origin (of any race)	11,482,033	±3,543	7.1%	±0.1
White alone, not Hispanic or Latino	12,177,057	±4,909	5.8%	±0.1

Table: ACSST5Y2021.S2301

	California			
	Total		Unemployment rate	
Label	Estimate	Margin of Error	Estimate	Margin of Error
Population 20 to 64 years	23,754,040	±1,322	6.2%	±0.1
SEX				
Male	12,030,042	±1,070	6.0%	±0.1
Female	11,723,998	±1,048	6.3%	±0.1
With own children under 18 years	3,980,978	±17,897	6.1%	±0.1
With own children under 6 years only	855,448	±10,500	6.3%	±0.3
With own children under 6 years and 6 to 17 years	798,255	±6,030	7.3%	±0.3
With own children 6 to 17 years only	2,327,275	±13,455	5.6%	±0.2
POVERTY STATUS IN THE PAST 12 MONTHS				
Below poverty level	2,561,920	±21,505	23.3%	±0.3
At or above the poverty level	20,816,168	±21,685	4.9%	±0.1
DISABILITY STATUS				
With any disability	1,908,861	±12,591	13.4%	±0.3
EDUCATIONAL ATTAINMENT				
Population 25 to 64 years	21,127,191	±1,337	5.6%	±0.1
Less than high school graduate	3,174,485	±16,996	7.6%	±0.2
High school graduate (includes equivalency)	4,332,064	±25,912	7.0%	±0.1
Some college or associate's degree	6,017,519	±18,692	6.0%	±0.1
Bachelor's degree or higher	7,603,123	±36,727	4.0%	±0.1



9001-9019 LONG BEACH BOULEVARD HABITAT FOR HUMANITY PROJECT

Appendix G
Statutory Checklist Reference Documents

US Census Bureau, S2301 Employment Status, US

Table: ACSST5Y2021.S2301

	United States			
	Total		Unemployment rate	
Label	Estimate	Margin of Error	Estimate	Margin of Error
Population 16 years and over	264,087,642	±15,794	5.5%	±0.1
AGE				
16 to 19 years	17,360,900	±14,969	15.9%	±0.1
20 to 24 years	21,574,425	±8,736	9.6%	±0.1
25 to 29 years	22,854,328	±7,073	6.3%	±0.1
30 to 34 years	22,506,614	±6,909	5.2%	±0.1
35 to 44 years	42,441,883	±8,411	4.5%	±0.1
45 to 54 years	41,631,458	±8,551	4.1%	±0.1
55 to 59 years	21,928,936	±27,479	4.0%	±0.1
60 to 64 years	20,900,477	±28,268	3.8%	±0.1
65 to 74 years	31,590,619	±4,450	4.1%	±0.1
75 years and over	21,298,002	±4,480	4.0%	±0.1
RACE AND HISPANIC OR LATINO ORIGIN				
White alone	184,597,921	±76,610	4.6%	±0.1
Black or African American alone	32,357,111	±23,747	9.2%	±0.1
American Indian and Alaska Native alone	2,087,150	±11,584	9.2%	±0.2
Asian alone	15,438,177	±13,725	4.6%	±0.1
Native Hawaiian and Other Pacific Islander alone	480,126	±4,259	7.2%	±0.4
Some other race alone	13,751,844	±58,174	6.7%	±0.1
Two or more races	15,375,313	±53,107	7.6%	±0.1
Hispanic or Latino origin (of any race)	44,041,980	±7,717	6.4%	±0.1
White alone, not Hispanic or Latino	163,862,039	±23,563	4.5%	±0.1

Table: ACSST5Y2021.S2301

	United States			
	Total		Unemployment rate	
Label	Estimate	Margin of Error	Estimate	Margin of Error
Population 20 to 64 years	193,838,121	±10,169	5.1%	±0.1
SEX				
Male	96,972,069	±7,102	5.2%	±0.1
Female	96,866,052	±6,292	5.1%	±0.1
With own children under 18 years	33,519,284	±141,545	5.0%	±0.1
With own children under 6 years only	7,480,143	±74,640	5.7%	±0.1
With own children under 6 years and 6 to 17 years	6,726,973	±24,684	6.2%	±0.1
With own children 6 to 17 years only	19,312,168	±88,355	4.4%	±0.1
POVERTY STATUS IN THE PAST 12 MONTHS				
Below poverty level	21,997,436	±127,946	21.3%	±0.1
At or above the poverty level	168,192,065	±135,232	3.9%	±0.1
DISABILITY STATUS				
With any disability	19,921,058	±56,355	11.6%	±0.1
EDUCATIONAL ATTAINMENT				
Population 25 to 64 years	172,263,696	±11,754	4.6%	±0.1
Less than high school graduate	17,756,046	±103,886	8.1%	±0.1
High school graduate (includes equivalency)	43,535,564	±197,501	6.1%	±0.1
Some college or associate's degree	50,581,536	±53,165	4.8%	±0.1
Bachelor's degree or higher	60,390,550	±307,303	2.9%	±0.1



9001-9019 LONG BEACH BOULEVARD HABITAT FOR HUMANITY PROJECT

Appendix G
Statutory Checklist Reference Documents

US Census Bureau, S2301 Employment Status, City of South Gate

Table: ACSST5Y2021.S2301

	South Gate city, California			
	Total		Unemployment rate	
Label	Estimate	Margin of Error	Estimate	Margin of Error
Population 16 years and over	72,165	±935	8.6%	±0.9
AGE				
16 to 19 years	5,772	±472	31.4%	±7.7
20 to 24 years	7,221	±608	12.4%	±3.1
25 to 29 years	8,004	±710	11.3%	±2.7
30 to 34 years	6,620	±593	8.5%	±2.8
35 to 44 years	12,494	±793	5.6%	±1.8
45 to 54 years	12,189	±902	5.5%	±1.7
55 to 59 years	5,026	±577	6.4%	±3.8
60 to 64 years	4,633	±503	6.3%	±3.6
65 to 74 years	6,676	±537	7.2%	±3.9
75 years and over	3,530	±466	38.3%	±27.1
RACE AND HISPANIC OR LATINO ORIGIN				
White alone	32,012	±1,862	8.7%	±1.5
Black or African American alone	553	±172	22.0%	±9.5
American Indian and Alaska Native alone	1,056	±321	12.1%	±7.5
Asian alone	672	±498	3.2%	±4.5
Native Hawaiian and Other Pacific Islander alone	119	±149	29.0%	±19.2
Some other race alone	26,630	±1,776	9.1%	±1.6
Two or more races	11,123	±1,862	6.5%	±2.5
Hispanic or Latino origin (of any race)	68,315	±1,175	8.5%	±1.0
White alone, not Hispanic or Latino	2,362	±379	5.3%	±5.0

Table: ACSST5Y2021.S2301

	South Gate city, California			
	Total		Unemployment rate	
Label	Estimate	Margin of Error	Estimate	Margin of Error
Population 20 to 64 years	56,187	±927	7.8%	±0.9
SEX				
Male	27,927	±972	7.2%	±1.1
Female	28,260	±667	8.5%	±1.4
With own children under 18 years	10,216	±504	6.7%	±2.2
With own children under 6 years only	1,727	±320	2.4%	±2.6
With own children under 6 years and 6 to 17 years	1,918	±274	6.4%	±4.4
With own children 6 to 17 years only	6,571	±563	8.1%	±3.2
POVERTY STATUS IN THE PAST 12 MONTHS				
Below poverty level	6,477	±830	26.2%	±5.6
At or above the poverty level	49,682	±1,235	6.1%	±0.9
DISABILITY STATUS				
With any disability	3,938	±626	22.9%	±7.8
EDUCATIONAL ATTAINMENT				
Population 25 to 64 years	48,966	±987	7.1%	±1.0
Less than high school graduate	17,283	±1,053	9.0%	±2.0
High school graduate (includes equivalency)	13,846	±868	4.8%	±1.3
Some college or associate's degree	12,094	±826	8.7%	±2.2
Bachelor's degree or higher	5,743	±672	4.5%	±1.9



9001-9019 LONG BEACH BOULEVARD HABITAT FOR HUMANITY PROJECT

Appendix G
Statutory Checklist Reference Documents

SCAG 6th Cycle Final RNHA Allocation Plan

SCAG 6TH CYCLE FINAL RHNA ALLOCATION PLAN

SCAG 6TH CYCLE FINAL RHNA ALLOCATION PLAN (approved by HCD on 3/22/21 and modified on 7/1/21)*
7/1/21

ALLOCATION BY COUNTY

	Total	Very-low income	Low income	Moderate income	Above moderate income
Imperial	15,993	4,671	2,357	2,198	6,767
Los Angeles	812,060	217,273	123,022	131,381	340,384
Orange	183,861	46,416	29,242	32,546	75,657
Riverside	167,351	41,995	26,473	29,167	69,716
San Bernardino	138,110	35,667	21,903	24,140	56,400
Ventura	24,452	5,774	3,810	4,525	10,343
TOTAL	1,341,827	351,796	206,807	223,957	559,267

ALLOCATION BY Regional Early Action Planning (REAP) SUBREGIONS

<i>REAP Subregion</i>	Total	Very-low income	Low income	Moderate income	Above moderate income
CVAG	31,619	6,204	4,664	5,561	15,190
Gateway Cities COG	71,678	20,029	10,391	10,822	30,436
Imperial County	15,993	4,671	2,357	2,198	6,767
Las Virgenes-Malibu COG	933	362	199	183	189
Los Angeles City	456,643	115,978	68,743	75,091	196,831
North Los Angeles County	15,663	4,001	2,129	2,332	7,201
Orange County COG	183,861	46,416	29,242	32,546	75,657
San Bernardino COG/SBCTA	138,110	35,667	21,903	24,140	56,400
San Fernando Valley COG	34,023	9,850	5,588	5,614	12,971
San Gabriel Valley COG	89,616	25,208	13,400	14,074	36,934
South Bay Cities COG	34,179	10,221	5,236	5,539	13,183
Uninc. Los Angeles County	90,052	25,648	13,691	14,180	36,533
Uninc. Riverside County	40,647	10,371	6,627	7,347	16,302
Ventura COG	24,452	5,774	3,810	4,525	10,343
Westside Cities COG	19,273	5,976	3,645	3,546	6,106
Western Riverside COG	95,085	25,420	15,182	16,259	38,224

ALLOCATION BY LOCAL JURISDICTION

County	Jurisdiction	Total	Very-low income	Low income	Moderate income	Above- moderate income
Imperial	Brawley city	1426	399	210	202	615
Imperial	Calexico city	4868	1279	655	614	2320
Imperial	Calipatria city	151	36	21	16	78
Imperial	El Centro city	3442	1001	490	462	1489
Imperial	Holtville city	171	41	33	26	71

SCAG 6TH CYCLE FINAL RHNA ALLOCATION PLAN

ALLOCATION BY LOCAL JURISDICTION

County	Jurisdiction	Total	Very-low		Moderate	Above-
			income	Low income	income	moderate income
Imperial	Imperial city	1601	704	346	294	257
Imperial	Unincorporated Imp	4301	1203	596	580	1922
Imperial	Westmorland city	33	8	6	4	15
Los Angeles	Agoura Hills city	318	127	72	55	64
Los Angeles	Alhambra city	6825	1774	1036	1079	2936
Los Angeles	Arcadia city	3214	1102	570	605	937
Los Angeles	Artesia city	1069	312	168	128	461
Los Angeles	Avalon city	27	8	5	3	11
Los Angeles	Azusa city	2651	760	368	382	1141
Los Angeles	Baldwin Park city	2001	576	275	263	887
Los Angeles	Bell city	229	43	24	29	133
Los Angeles	Bell Gardens city	503	100	29	72	302
Los Angeles	Bellflower city	3735	1015	488	553	1679
Los Angeles	Beverly Hills city	3104	1008	680	602	814
Los Angeles	Bradbury city	41	16	9	9	7
Los Angeles	Burbank city	8772	2553	1418	1409	3392
Los Angeles	Calabasas city	354	132	71	70	81
Los Angeles	Carson city	5618	1770	913	875	2060
Los Angeles	Cerritos city	1908	679	345	332	552
Los Angeles	Claremont city	1711	556	310	297	548
Los Angeles	Commerce city	247	55	22	39	131
Los Angeles	Compton city	1004	235	121	131	517
Los Angeles	Covina city	1910	614	268	281	747
Los Angeles	Cudahy city	393	80	36	53	224
Los Angeles	Culver City city	3341	1108	604	560	1069
Los Angeles	Diamond Bar city	2521	844	434	437	806
Los Angeles	Downey city	6525	2079	946	915	2585
Los Angeles	Duarte city	888	269	145	137	337
Los Angeles	El Monte city	8502	1797	853	1233	4619
Los Angeles	El Segundo city	492	189	88	84	131
Los Angeles	Gardena city	5735	1485	761	894	2595
Los Angeles	Glendale city	13425	3439	2163	2249	5574
Los Angeles	Glendora city	2276	735	386	388	767
Los Angeles	Hawaiian Gardens ci	331	61	44	46	180
Los Angeles	Hawthorne city	1734	445	204	249	836
Los Angeles	Hermosa Beach city	558	232	127	106	93
Los Angeles	Hidden Hills city	40	17	8	9	6
Los Angeles	Huntington Park city	1605	264	196	243	902
Los Angeles	Industry city	17	6	4	2	5
Los Angeles	Inglewood city	7439	1813	955	1112	3559
Los Angeles	Irwindale city	119	36	11	17	55
Los Angeles	La Cañada Flintridge	612	252	135	139	86

SCAG 6TH CYCLE FINAL RHNA ALLOCATION PLAN

ALLOCATION BY LOCAL JURISDICTION

County	Jurisdiction	Total	Very-low income	Low income	Moderate income	Above-moderate income
Los Angeles	La Habra Heights city	172	78	35	31	28
Los Angeles	La Mirada city	1962	634	342	320	666
Los Angeles	La Puente city	1929	544	275	275	835
Los Angeles	La Verne city	1346	414	239	223	470
Los Angeles	Lakewood city	3922	1296	637	653	1336
Los Angeles	Lancaster city	9023	2224	1194	1328	4277
Los Angeles	Lawndale city	2497	732	311	371	1083
Los Angeles	Lomita city	829	239	124	128	338
Los Angeles	Long Beach city	26502	7141	4047	4158	11156
Los Angeles	Los Angeles city	456643	115978	68743	75091	196831
Los Angeles	Lynwood city	1558	377	139	235	807
Los Angeles	Malibu city	79	28	19	17	15
Los Angeles	Manhattan Beach city	774	322	165	155	132
Los Angeles	Maywood city	365	55	47	55	208
Los Angeles	Monrovia city	1670	519	262	254	635
Los Angeles	Montebello city	5186	1314	707	777	2388
Los Angeles	Monterey Park city	5257	1324	822	848	2263
Los Angeles	Norwalk city	5034	1546	759	658	2071
Los Angeles	Palmdale city	6640	1777	935	1004	2924
Los Angeles	Palos Verdes Estates	199	82	44	48	25
Los Angeles	Paramount city	364	92	43	48	181
Los Angeles	Pasadena city	9429	2747	1662	1565	3455
Los Angeles	Pico Rivera city	1024	299	146	149	430
Los Angeles	Pomona city	10558	2799	1339	1510	4910
Los Angeles	Rancho Palos Verdes	639	253	139	125	122
Los Angeles	Redondo Beach city	2490	936	508	490	556
Los Angeles	Rolling Hills city	45	20	9	11	5
Los Angeles	Rolling Hills Estates city	191	82	42	38	29
Los Angeles	Rosemead city	4612	1154	638	686	2134
Los Angeles	San Dimas city	1248	384	220	206	438
Los Angeles	San Fernando city	1795	461	273	284	777
Los Angeles	San Gabriel city	3023	846	415	466	1296
Los Angeles	San Marino city	397	149	91	91	66
Los Angeles	Santa Clarita city	10031	3397	1734	1672	3228
Los Angeles	Santa Fe Springs city	952	253	159	152	388
Los Angeles	Santa Monica city	8895	2794	1672	1702	2727
Los Angeles	Sierra Madre city	204	79	39	35	51
Los Angeles	Signal Hill city	517	161	78	90	188
Los Angeles	South El Monte city	577	131	64	70	312
Los Angeles	South Gate city	8282	2136	994	1173	3979
Los Angeles	South Pasadena city	2067	757	398	334	578
Los Angeles	Temple City city	2186	630	350	369	837

SCAG 6TH CYCLE FINAL RHNA ALLOCATION PLAN

ALLOCATION BY LOCAL JURISDICTION

County	Jurisdiction	Total	Very-low		Moderate	Above-
			income	Low income	income	moderate income
Los Angeles	Torrance city	4939	1621	846	853	1619
Los Angeles	Unincorporated Los	90052	25648	13691	14180	36533
Los Angeles	Vernon city	9	5	4	0	0
Los Angeles	Walnut city	1293	427	225	231	410
Los Angeles	West Covina city	5346	1653	850	865	1978
Los Angeles	West Hollywood city	3933	1066	689	682	1496
Los Angeles	Westlake Village city	142	58	29	32	23
Los Angeles	Whittier city	3439	1025	537	556	1321
Orange	Aliso Viejo city	1195	390	214	205	386
Orange	Anaheim city	17453	3767	2397	2945	8344
Orange	Brea city	2365	669	393	403	900
Orange	Buena Park city	8919	2119	1343	1573	3884
Orange	Costa Mesa city	11760	2919	1794	2088	4959
Orange	Cypress city	3936	1150	657	623	1506
Orange	Dana Point city	530	147	84	101	198
Orange	Fountain Valley city	4839	1307	786	834	1912
Orange	Fullerton city	13209	3198	1989	2271	5751
Orange	Garden Grove city	19168	4166	2801	3211	8990
Orange	Huntington Beach ci	13368	3661	2184	2308	5215
Orange	Irvine city	23610	6396	4235	4308	8671
Orange	La Habra city	804	192	116	130	366
Orange	La Palma city	802	224	140	137	301
Orange	Laguna Beach city	394	118	80	79	117
Orange	Laguna Hills city	1985	568	353	354	710
Orange	Laguna Niguel city	1207	348	202	223	434
Orange	Laguna Woods city	997	127	136	192	542
Orange	Lake Forest city	3236	956	543	559	1178
Orange	Los Alamitos city	769	194	119	145	311
Orange	Mission Viejo city	2217	674	401	397	745
Orange	Newport Beach city	4845	1456	930	1050	1409
Orange	Orange city	3936	1067	604	677	1588
Orange	Placentia city	4398	1243	680	782	1693
Orange	Rancho Santa Marga	680	209	120	125	226
Orange	San Clemente city	982	282	164	188	348
Orange	San Juan Capistrano	1054	270	173	183	428
Orange	Santa Ana city	3137	606	362	545	1624
Orange	Seal Beach city	1243	258	201	239	545
Orange	Stanton city	1231	165	145	231	690
Orange	Tustin city	6782	1724	1046	1132	2880
Orange	Unincorporated Ora	10340	3107	1866	2006	3361
Orange	Villa Park city	296	93	60	61	82
Orange	Westminster city	9759	1881	1473	1784	4621

SCAG 6TH CYCLE FINAL RHNA ALLOCATION PLAN

ALLOCATION BY LOCAL JURISDICTION

County	Jurisdiction	Total	Very-low		Moderate	Above-
			income	Low income	income	moderate income
Orange	Yorba Linda city	2415	765	451	457	742
Riverside	Banning city	1673	317	193	280	883
Riverside	Beaumont city	4210	1229	721	723	1537
Riverside	Blythe city	494	82	71	96	245
Riverside	Calimesa city	2017	495	275	379	868
Riverside	Canyon Lake city	129	43	24	24	38
Riverside	Cathedral City city	2549	540	353	457	1199
Riverside	Coachella city	7886	1033	999	1367	4487
Riverside	Corona city	6088	1752	1040	1096	2200
Riverside	Desert Hot Springs c	3873	569	535	688	2081
Riverside	Eastvale City	3028	1145	672	635	576
Riverside	Hemet city	6466	812	732	1174	3748
Riverside	Indian Wells city	382	117	81	91	93
Riverside	Indio city	7812	1793	1170	1315	3534
Riverside	Jurupa Valley City	4497	1207	749	731	1810
Riverside	La Quinta city	1530	420	269	297	544
Riverside	Lake Elsinore city	6681	1878	1099	1134	2570
Riverside	Menifee city	6609	1761	1051	1106	2691
Riverside	Moreno Valley city	13627	3779	2051	2165	5632
Riverside	Murrieta city	3043	1009	583	545	906
Riverside	Norco city	454	145	85	82	142
Riverside	Palm Desert city	2790	675	460	461	1194
Riverside	Palm Springs city	2557	545	408	461	1143
Riverside	Perris city	7805	2030	1127	1274	3374
Riverside	Rancho Mirage city	1746	430	318	328	670
Riverside	Riverside city	18458	4861	3064	3139	7394
Riverside	San Jacinto city	3392	800	465	560	1567
Riverside	Temecula city	4193	1359	801	778	1255
Riverside	Unincorporated Rive	40647	10371	6627	7347	16302
Riverside	Wildomar city	2715	798	450	434	1033
San Bernardino	Adelanto city	3763	394	566	651	2152
San Bernardino	Apple Valley town	4290	1086	600	747	1857
San Bernardino	Barstow city	1520	172	228	300	820
San Bernardino	Big Bear Lake city	212	50	33	37	92
San Bernardino	Chino city	6978	2113	1284	1203	2378
San Bernardino	Chino Hills city	3729	1388	821	789	731
San Bernardino	Colton city	5434	1318	668	906	2542
San Bernardino	Fontana city	17519	5109	2950	3035	6425
San Bernardino	Grand Terrace city	630	189	92	106	243
San Bernardino	Hesperia city	8155	1921	1231	1409	3594
San Bernardino	Highland city	2513	619	409	471	1014
San Bernardino	Loma Linda city	2051	523	311	352	865

SCAG 6TH CYCLE FINAL RHNA ALLOCATION PLAN

ALLOCATION BY LOCAL JURISDICTION

County	Jurisdiction	Total	Very-low income	Low income	Moderate income	Above-moderate income
San Bernardino	Montclair city	2593	698	383	399	1113
San Bernardino	Needles city	87	10	11	16	50
San Bernardino	Ontario city	20854	5640	3286	3329	8599
San Bernardino	Rancho Cucamonga	10525	3245	1920	2038	3322
San Bernardino	Redlands city	3516	967	615	652	1282
San Bernardino	Rialto city	8272	2218	1206	1371	3477
San Bernardino	San Bernardino city	8123	1415	1097	1448	4163
San Bernardino	Twentynine Palms ci	1047	231	127	185	504
San Bernardino	Unincorporated San	8832	2179	1360	1523	3770
San Bernardino	Upland city	5686	1584	959	1013	2130
San Bernardino	Victorville city	8165	1735	1136	1504	3790
San Bernardino	Yucaipa city	2866	708	493	511	1154
San Bernardino	Yucca Valley town	750	155	117	145	333
Ventura	Camarillo city	1376	353	244	271	508
Ventura	Fillmore city	415	73	61	72	209
Ventura	Moorpark city	1289	377	233	245	434
Ventura	Ojai city	53	13	9	10	21
Ventura	Oxnard city	8549	1840	1071	1538	4100
Ventura	Port Hueneme city	125	26	16	18	65
Ventura	San Buenaventura (\	5312	1187	865	950	2310
Ventura	Santa Paula city	657	102	99	121	335
Ventura	Simi Valley city	2793	749	493	518	1033
Ventura	Thousand Oaks city	2621	735	494	532	860
Ventura	Unincorporated Ven	1262	319	225	250	468

**The 6th Cycle RHNA Allocation Plan was approved by HCD on 3/22/21.*

conditions. This Plan includes a transfer from the County of Orange to the City of Santa Ana, which was approved by the SCAG Regional Council on 6/3/21, and a transfer from the County of Orange to the City of Placentia, which was approved on 7/1/21.