



# LEGISLATIVE PLATFORM 2023

[WWW.CITYOFSOUTHGATE.ORG](http://WWW.CITYOFSOUTHGATE.ORG)  
(323) 563-9500





# ABOUT THIS LEGISLATIVE PLATFORM

The Legislative Platform is a tool for the City to navigate through the legislative landscape. The document outlines the City's position on priority and important matters. This Legislative Platform allows Council Members and City staff to address and take immediate action on legislative and regulatory issues at the federal, state and regional levels.

This platform supplements existing City Council established goals and policies in various documents including the City's General Plan and approved Resolutions. The policy statements below are a summary of issues significant to the City. The document is intended to be updated on an annual basis.

Publication of the platform allows for transparent awareness to the community and other interested parties of the City's legislative priorities.



# CITY OFFICIALS



**MAYOR**  
**Maria del Pilar Avalos**



**VICE MAYOR**  
**Gil Hurtado**



**COUNCIL MEMBER**  
**Maria Davila**



**COUNCIL MEMBER**  
**Joshua Barron**



**COUNCIL MEMBER**  
**Al Rios**

**CITY CLERK**  
**Yodit Glaze**

**CITY TREASURER**  
**Jose De La Paz**

**CITY MANAGER**  
**Chris Jeffers**

**CITY ATTORNEY**  
**Raul F. Salinas**

# LEGISLATIVE PLATFORM GOALS

- Approval of the Legislative Platform streamlines the City's process and allows City staff to effectively respond and take immediate action on pressing legislation under City Council direction.
- Federal and state legislative proposals and policies consistent with the Legislative Platform may be supported by the City.
- Policies and proposals inconsistent with this Legislative Platform may be opposed by the City.
- For proposed legislation, consistent with the Legislative Platform, City staff shall be authorized to prepare position letters .
- Items not addressed in the Legislative Platform will require further direction from the City Council.



# PUBLIC SAFETY

## SUPPORT

- Efforts to promote racial and social equity.
- Tools and resources to address critical community challenges such as homelessness, mental health, domestic violence, drug rehabilitation and human trafficking.
- Efforts to eliminate the use of illegal fireworks.
- Efforts to reduce illegal access to firearms.
- Measures aimed at gang suppression, prevention and intervention.



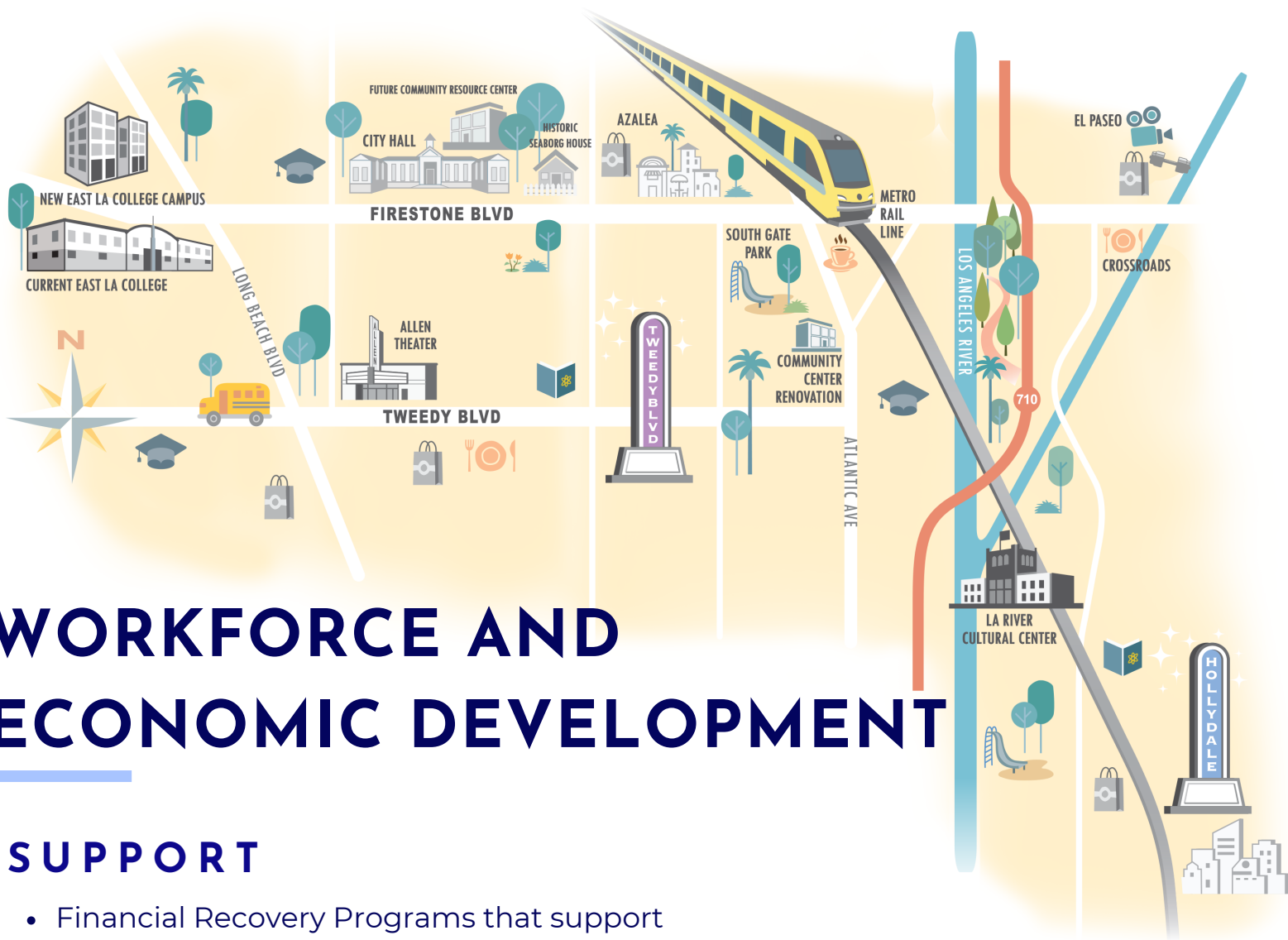
## OPPOSE

- Legislation to reduce and/or eliminate Asset Forfeiture revenues.
- Legislation/Initiatives which may change the criminal justice system and endanger the public safety of our community.

## SEEK FUNDING FOR

- Mental Health Service Programs
- Homeless Prevention Programs
- Monitoring impacts of the early release initiative.
- Gang Reduction and Youth Development Programs
- Community Policing Programs
- The development of an Emergency Operation Center.





# WORKFORCE AND ECONOMIC DEVELOPMENT

## SUPPORT

- Financial Recovery Programs that support residents and small businesses.
- Expansion of job placement and career development programs.
- Programs aimed to develop and advance small businesses.
- Funding and financing of programs aimed at attracting new development.
- Regional business friendly principles and practices.
- Development projects benefiting the Gateway region.

## OPPOSE

- New legislation that may hurt start-up businesses.

## SEEK FUNDING FOR

- Business revitalization for Tweedy Blvd. and Hollydale areas.
- Establishing and maintaining a hire local program.
- Establishing and maintaining a youth employment program.
- Workforce Development Programs.
- Implement the Gateway Specific Plan.

# INFRASTRUCTURE

## SUPPORT

- Local and regional infrastructure improvements.
- Policies and/or programs that could increase safety, enhance mobility, improve infrastructure conditions, reduce environmental impacts, promote sustainability, enhance service and reliability, and encourage alternative modes of transportation.
- Funding and development efforts to plan and construct the West Santa Ana Branch Transit Corridor Project.
- Efforts to develop and revitalize the Lower Los Angeles River.
- Funding for reducing the digital divide.



## OPPOSE

- Funding shifts that reduce or fail to allocate South Gate's allocation share.
- Mandated programs that fail to provide full funding.

## SEEK FUNDING FOR

- Parks projects in support of revitalizing the Lower Los Angeles River.
- South Gate Regional Bikeway Connectivity Program
- Storm Water Quality and Compliance Program
- Roadway improvements for the City's main boulevards and residential streets.
- Park Master Plan implementation
- Citywide Lighting Master Plan implementation to upgrade streetlights.
- Reducing the City's "Local Match" requirement under Measure M.



# HEALTH AND ENVIRONMENT

## SUPPORT

- Efforts to offer mental health counseling, homelessness prevention, medical screening and food distribution programs.
- Legislation improving air quality and reducing and mitigating emissions.
- Legislation aimed at increasing environmentally friendly buildings, businesses and manufacturing.
- Measures to continue funding and expanding parks, recreation and open spaces.
- Healthy lifestyle programs aimed at eliminating obesity.
- Local control programs for water, watershed and catch basin review and regulation.
- Legislation that requires railroad companies to timely fund and service their right-of- ways to address issues such as homeless encampments, litter removal and bulky items.
- Legislation cleaning up impaired/contaminated properties.

## SEEK FUNDING FOR:

- Community wellness programming.
- Water conservation, landscape demonstration projects.
- Vehicle replacement for alternative fuel program.
- Conservation and energy efficiency upgrades to City facilities.
- Development of first/last mile projects.





# GOVERNMENT ADMINISTRATION

---

## SUPPORT

- Employment equity across all functions including recruitment, hiring, training and personnel policies.
- Proposals to enhance and strengthen local representation on regional commissions and task forces.
- Legislation that provides for an even distribution of resources to local governments.
- Future efforts that would enhance the City's voice and needs at county, state, and federal levels.
- Programs that assist in maintaining fiscal sustainability.
- Legislation that improves good governance.

## OPPOSE

- Unfunded state mandated programs.
- Fast track bills that bypass local input.
- Legislation reducing local government control.
- Legislation that may negatively impact fiscal sustainability.



# EDUCATION AND HUMAN RESOURCES

## SUPPORT

- Efforts to provide federal, state and local relief resources to K-12 schools and institutions of higher education.
- Expansion and availability of early care and education opportunities in the City.
- Increasing affordability and accessibility to higher education institutions.
- Improving the lives of immigrants and their families.
- Initiatives aiming to increase citizenship and voter participation.
- Programs that reduce the existing educational and digital divide.



## CIVIC RESOURCES

### SUPPORT

- Expansion of higher education facilities in the City and surrounding communities.

### OPPOSE

- Closures to vital community resources not under municipal control.

### SEEK FUNDING FOR:

- South Gate Park Girls Club House





# HOUSING

## SUPPORT

- Rental assistance programs to provide emergency rental relief assistance.
- Resources to provide emergency shelters and permanent supportive housing for adults and youth.
- Legislation that provides flexibility for cities to exercise local housing control to best address the needs of the community.
- Legislation that creates affordable housing and transit-oriented development.

## OPPOSE

- Any legislation that preempts local land use authority and control.
- New program mandates that are unfunded.
- Legislation that results in increasing parking impacts related to housing.

## SEEK FUNDING FOR

- Emergency assistance to help secure housing for people experiencing or at risk of homelessness.
- Affordable housing options and programs for vulnerable populations.



# ABOUT THE CITY OF SOUTH GATE

Located in the heart of the Los Angeles Metropolitan Area, the City of South Gate is a busy, urban community consisting of residential, commercial, and industrial development spread over 7.4 square miles. It currently ranks as the 73rd largest city in California and 17th largest in Los Angeles County with a population of 93,259. South Gate is known for its outstanding city services, remarkable parks and recreation facilities, and family-friendly environment.

Incorporated on January 20, 1923, the city is strategically located along the 710 Freeway with close access to the 105 Freeway. South Gate is 20 miles north of the Ports of Los Angeles and Long Beach, 7 miles south of downtown Los Angeles, and 13 miles east of the Los Angeles International Airport, making it an ideal location for residents in the Los Angeles County area, and a main thoroughfare for regional, national, and global transportation and trade for businesses.

